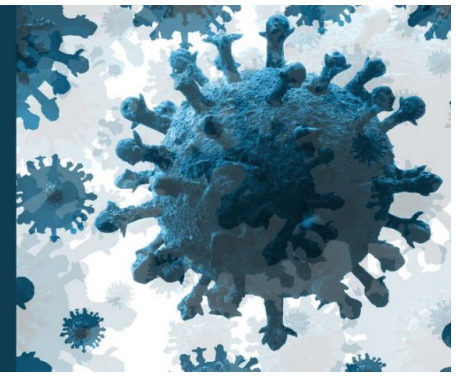


# COVID-19 Immunization Update

For Health Care Providers in Oxford County, Elgin County,  
and the City of St. Thomas



August 27, 2021

## An Update from Dr. Joyce Lock, Medical Officer of Health

*Please share with staff as appropriate.*

### What You Need to Know This Week

#### 1. 3A: ASK, ADVISE, ACT

- **ACTION:** Reminder to implement these tools with all clients and patients you interact with, regardless of whether their consultation with you is about vaccination.
  - [Intervention Flow Chart](#)
  - [Judgment Free Zone Poster](#) (also available for pick up at Southwestern Public Health offices in St. Thomas (Talbot) and Woodstock (Buller))

#### 2. CHANGES TO SWPH MASS IMMUNIZATION CLINICS

- Refer to [this Health Advisory](#) for a full overview of changes to Southwestern Public Health's Mass Immunization Clinics, including the closure of the Tillsonburg clinic effective end of day today, August 27<sup>th</sup>.

#### 3. UPDATES TO COVID-19 CASE AND CONTACT GUIDANCE

- Refer to [this Information Update](#) for a full overview of changes to COVID-19 case and contact guidance.

#### 4. COORDINATING VACCINE SUPPLY RETURNS

- For pharmacies coordinating supply returns to normal distribution channels, email [OPDPInfoBox@Ontario.ca](mailto:OPDPInfoBox@Ontario.ca) to ensure they can track locations. No pre-approval required.

#### 5. REMINDER: VACCINATION POLICIES IN HIGH-RISK SETTINGS

- The Ministry also announced mandatory vaccination policies for high-risk settings, including hospitals and home and community care service providers.
- Vaccination policy effective no later than September 7, and at a minimum requires proof of one of three things:
  - Full vaccination against COVID-19
  - A medical reason for not being vaccinated against COVID-19, or
  - Completion of a COVID-19 vaccination educational session

Southwestern Public Health  
[www.swpublichealth.ca](http://www.swpublichealth.ca)  
1-800-922-0096



- Individuals who do not provide proof of full vaccination will be required to undertake regular antigen testing. This will be tracked and reported to the Provincial government.
- View [Ministry Directive #6](#) for full details.

## 6. SWPH REGION VACCINATION RATES

- As of August 26:
  - Percentage of SWPH 12+ population with at least one dose: 81.6%
  - Percentage of SWPH 12+ population with both doses: 74.3%
- These numbers come from the Ministry of Health.

## 7. UPDATED MINISTRY GUIDANCE

- [COVID-19 Vaccine Information Sheet \(August 20\)](#) includes new guidance for third doses.
- [COVID-19 Vaccine Information Sheet for Youth \(12-17\) \(August 20\)](#) includes new guidance on when third doses are recommended and details on allergens.

## 8. REMINDER: SINGLE DOSE SYRINGES AVAILABLE

- Preloaded single doses of mRNA vaccines are available for delivery to primary care providers.
- Each syringe will be labelled with the product name, dose, lot number, expiry date and preloaded time for documentation in the COVAXon system. **If you are not onboarded to the COVAXon system, please contact us to discuss options.**
- To access these doses:
  1. Ensure you have clients, visitors, staff, residents, etc. to receive the dose.
  2. Call between 8:30 am – 11:30 am for daily afternoon deliveries or future deliveries
    - Oxford County: Call **519-521-8645**
    - Elgin County and City of St. Thomas: Call **519-521-9045**
  3. **Indicate number of doses requested, preferred brand (Pfizer or Moderna), and date and time the vaccine will be administered.**
- NOTE: Pfizer doses MUST be administered within 6 hours of being preloaded; Moderna doses MUST be administered within 24 hours of being preloaded.