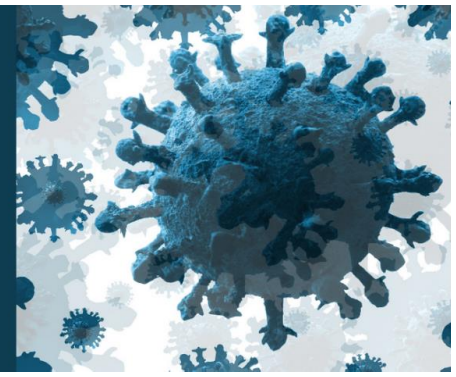


COVID-19 Immunization Update

For Health Care Providers in Oxford County, Elgin County,
and the City of St. Thomas



February 4, 2022

An Update from Dr. Joyce Lock, Medical Officer of Health

Please share with staff as appropriate.

What You Need to Know This Week

1. PLAXOVID COVID-19 ANTIVIRAL

- The Ministry has published initial details related to Plaxovid antivirals – view public-facing details here: <https://covid-19.ontario.ca/covid-19-antiviral-treatment>
- Supply is very limited across Ontario. The Province is preparing logistics for centralizing the administration of its supply across approximately 15 hubs.
- Only specific people are eligible for this treatment, and only within a 5-days after symptom onset. These individuals are at highest risk of severe outcomes and include:
 - [Immunocompromised adults](#) (18+) regardless of vaccine status
 - Unvaccinated individuals aged 60 and older
 - Unvaccinated First Nation, Inuit, and Metis individuals aged 50 and older
 - Unvaccinated individuals aged 50 and older with one or more [risk factors](#)
- Resource: [What prescribers and pharmacists need to know](#)
- More to follow as operational details are finalized by Ontario Health teams and local public health units.

2. WALK-IN HOURS EXPANDED

- Southwestern Public Health now welcomes walk ins for ages 50 and older, in addition to pregnant women, and anyone seeking a first dose.
- On Monday February 7, this will expand further to welcome any ages for walk ins.
- Walk in hours are 10AM to 3PM any day the clinics are open, **including this Saturday's clinics in St. Thomas and Woodstock.**

Southwestern Public Health
www.swpublichealth.ca
1-800-922-0096



3. BOOSTER DOSES FOR SELECT AGES 12-17

- We are awaiting direction from the Ministry of Health before we can begin administering booster doses to select ages 12-17.
- Last week, NACI published a new recommendation for boosters for people aged 12-17 who:
 - Have underlying medical conditions, including those who are immunocompromised who received a three-dose primary series (a booster would be their fourth dose);
 - Are residents of congregate living settings; or
 - Belong to racialized or marginalized communities disproportionately affected by COVID-19.
- For these individuals, offer the booster dose at least 6 months after a completed primary series.
- [Click here](#) to view the full summary.

4. COVAX ENTRIES

- **ACTION:** Please enter all any outstanding vaccination records into COVAX. We are currently issuing reminders to individuals about booster doses, and rely on current data about vaccination history to complete this task.

5. N95 FIT TESTING

- N95 fitting testing is available via Oxford Proresp. Contact Colin Vanderwetering at 519-421-0222 or by email cvandewetering@proresp.com.

6. UPCOMING PHO EDUCATIONAL EVENT

- February 8 – [PHO Rounds: Novel Disease Surveillance Tools for the Next Pandemic](#)

7. SWPH REGION VACCINATION RATES

- Data from the Ministry of Health as of February 2:
 - Percentage of SWPH 5+ population with at least one dose: 83.1%
 - Percentage of SWPH 5+ population with both doses: 79.2%
 - Percentage of SWPH 50+ population with three doses: 76.64%
 - **Percentage of SWPH 5-11 population with at least one dose: 43.6%**