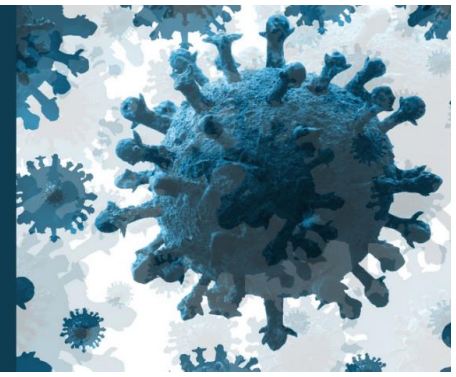


# COVID-19 Immunization Update

For Health Care Providers in Oxford County, Elgin County,  
and the City of St. Thomas



February 25, 2022

## An Update from Dr. Joyce Lock, Medical Officer of Health

*Please share with staff as appropriate.*

### What You Need to Know This Week

#### 1. INCREASING FOCUS ON MOBILE CLINIC DELIVERY

- Starting next week, Southwestern Public Health will be focusing more on mobile and pop-up clinic delivery for COVID-19 vaccines.
- Pop-up clinic locations are updated often at [www.swpublichealth.ca/covid19vaccines#popup](http://www.swpublichealth.ca/covid19vaccines#popup).

#### 2. NOVAVAX AUTHORIZED BY HEALTH CANADA

- [Health Canada has authorized](#) Novavax's Nuvaxovid COVID-19 vaccine for adults aged 18 and older. We await the Ministry's direction for Ontario guidance.

#### 3. MEDICAGO AUTHORIZED BY HEALTH CANADA

- [Health Canada has authorized](#) Medicago's Covifenz, a made-in-Canada plant-based option for adults aged 18-64. We await the Ministry's direction for Ontario guidance.

#### 4. FEDERAL GOVERNMENT SIGNS NEW COVID-19 ANTIBODY THERAPY AGREEMENT

- The Government of Canada has [signed a new conditional agreement](#) with AstraZeneca for 100,000 doses of its antibody therapy, Evusheld, for the prevention of COVID-19.
- The therapy is under review by health Canada of authorized use.

#### 5. PLAXOVID UPDATE

- The local distribution process for Plaxovid treatment is still in negotiation with the Ministry of Health. We will update you as more details become available.

#### 6. NEW VACCINE INFORMATION SHEET FOR AGES 12+

- [Click to access](#) the new version from the Ministry of Health, updated on February 22.

Southwestern Public Health  
[www.swpublichealth.ca](http://www.swpublichealth.ca)  
1-800-922-0096



## 7. SWPH REGION VACCINATION RATES

- Data from the Ministry of Health as of February 23
  - Percentage of SWPH 5+ population with at least one dose: 83.6%
  - Percentage of SWPH 5+ population with both doses: 80.6%
  - Percentage of SWPH 50+ population with three doses: 80.54%
  - **Percentage of SWPH 5-11 population with at least one dose: 44.2%**