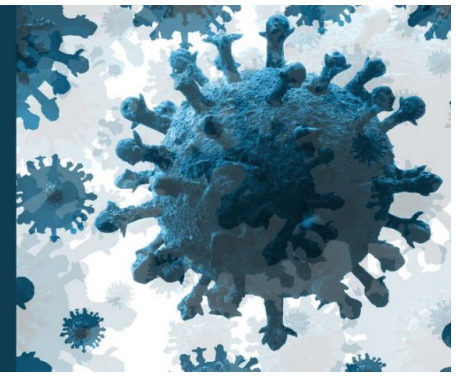


COVID-19 Immunization Update

For Health Care Providers in Oxford County, Elgin County,
and the City of St. Thomas



March 18, 2022

An Update from Dr. Joyce Lock, Medical Officer of Health

Please share with staff as appropriate.

What You Need to Know This Week

1. COVID-19 PUBLIC HEALTH PRINCIPLES

- Southwestern Public Health has published [recommendations for communities, businesses, and organizations](#) for how to live with COVID-19 while protecting the most vulnerable citizens.

2. UPDATED ISOLATION GUIDANCE

- Share this [updated patient resource](#) for what to do if exposed to COVID-19.

3. UPDATED FEDERAL TRAVEL RESTRICTIONS

- [Starting April 1](#), pre-entry tests will no longer be required for fully vaccinated travellers entering Canada. Until then, [pre-entry testing requirements](#) persist.
- For 14 days after arrival to Canada, travellers are still required to wear a well-fitted face covering in public spaces (including schools), monitor for symptoms, and keep a contact tracing log.

4. POP-UP CLINICS REMINDER

- Our pop-up clinic locations are updated often at www.swpublichealth.ca/covid19vaccines#popup.
- We also have secured the GO-VAXX Bus for two days at Norwich Community Centre on March 23 & 24, 11AM to 7PM. Please share with patients/clients within the Norwich area.
- Our mass immunization clinics at Memorial Arena and Goff Hall continue Monday, Wednesday and Friday from 9AM to 4PM daily. Closed from noon to 1PM daily. Walk-ins encouraged.

5. NOVAVAX MINISTRY GUIDANCE

- The Ministry has shared initial guidance with public health units. A final version will be shared soon.

Southwestern Public Health
www.swpublichealth.ca
1-800-922-0096



6. SWPH REGION VACCINATION RATES

- Data from the Ministry of Health as of March 16:
 - Percentage of SWPH 5+ population with at least one dose: 83.7%
 - Percentage of SWPH 5+ population with both doses: 81.1%
 - Percentage of SWPH 5-11 population with both doses: 27.2%
 - Percentage of SWPH 50+ population with three doses: 81.06%