

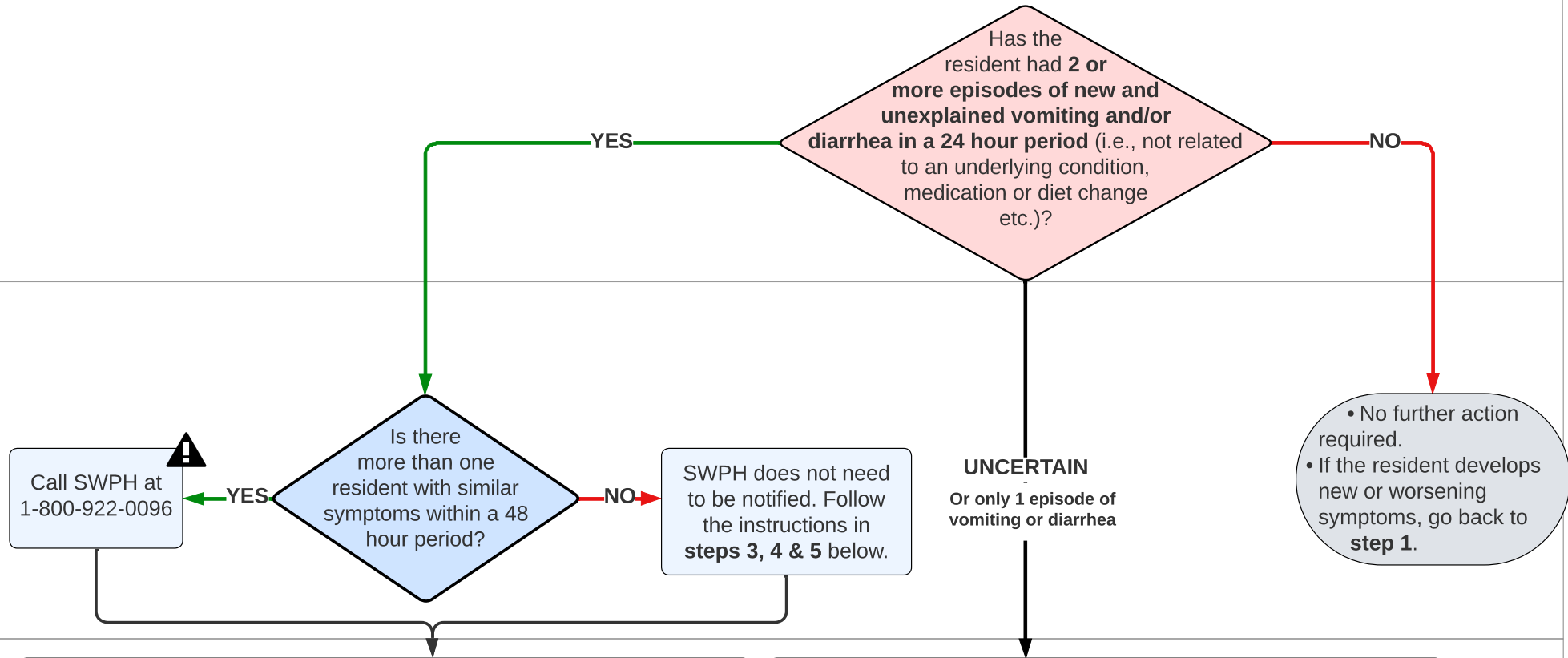
STEP 1: Assessment

STEP 2: Reporting to SWPH

STEP 3: Isolation & Additional Precautions

STEP 4: Testing

STEP 5: Test Results



**ISOLATION & ADDITIONAL PRECAUTIONS**

- **Case Isolation:** Isolate the ill resident in a private room. If a private room is not available, isolate the ill resident with their roommate with the following precautions in place: 1) draw the curtain 2) dedicate equipment 3) encourage masking 4) ensure adequate ventilation.
- **Roommate Isolation** (if applicable): Isolate asymptomatic roommate while awaiting COVID-19 PCR result for the ill resident.
- **Duration of isolation:** Go to **step 5 test results**.
- **PPE:** Use droplet contact precautions while providing direct care or interacting with the ill resident: **N95, eye protection, gown and gloves**. N95 may be changed to a medical mask once COVID-19 is ruled-out.
- **Cleaning and Disinfection:** Increase frequency of cleaning and disinfection of high-touch items and surfaces. Switch to an intermediate or high-level disinfectant.
- **Hand Hygiene:** Hand hygiene is the number one way to prevent the spread of infection. Ensure staff, residents and visitors perform frequent hand hygiene.

**ISOLATION & ADDITIONAL PRECAUTIONS**

- **Isolate** resident for 24 hrs to **monitor for new or worsening symptoms**.
- **Consult** with the resident's physician for an assessment.
- **PPE:** Use droplet contact precautions when providing direct care or interacting with the resident: **N95, eye protection, gown and gloves**.
- **Cleaning and Disinfection:** Increase frequency of cleaning and disinfection of high-touch items and surfaces. Switch to an intermediate or high-level disinfectant.
- **Hand Hygiene:** Hand hygiene is the number one way to prevent the spread of infection. Ensure staff, residents and visitors perform frequent hand hygiene.
- **If new or worsening symptoms develop, go back to step 1.**
- **If NO new or worsening symptoms develop and/or if there is an alternate, non-infectious diagnosis, isolation and additional precautions may be discontinued and testing is not required.**

**SPECIMEN COLLECTION & TRANSPORT**

- **Collect a nasopharyngeal (NP) swab** for COVID-19 only testing.
- **Complete a COVID-19 & Respiratory Virus Test Requisition.**
  - ▶ Use the medical director as the ordering provider for non-outbreak samples
  - ▶ Ensure "COVID-19" only is checked off in box 5 on the requisition.
  - ▶ Ensure resident demographics on the requisition match the demographics on the specimen container.
- **Collect stool samples\*** per medical director recommendations for sporadic cases (i.e., one symptomatic resident).
- **Complete a General Test Requisition for stool samples.**
  - ▶ Use the medical director as the ordering provider for non-outbreak samples
  - ▶ Ensure resident demographics on the requisition match the demographics on the specimen container(s).
- **Submit** non-outbreak samples (i.e., a sample from one sporadic ill resident) to the lab using your facility courier.
- **\*Contact SWPH** to discuss specimen collection and transport during a suspect or confirmed outbreak.

**COVID-19**

- **Case Isolation:** Isolate for 10 days from symptom onset. \*5 days after symptom onset, the resident may come out of isolation if symptoms have improved and they can independently and consistently mask.
- **Roommate Isolation:** Per SWPH direction.
- **Additional Precautions:** N95, eye protection, gown and gloves.
- **Antivirals:** Consult with resident's physician.
- **SWPH Notification Required:** Yes

**Norovirus**

- **Case Isolation:** Isolate until 3 days after the last episode of vomiting or diarrhea.
- **Roommate Isolation:** n/a
- **Additional Precautions:** Medical mask, eye protection, gown and gloves.
- **SWPH Notification Required:** Not unless there is more than one ill resident.

**Unknown (No Pathogen Detected)**

- **Case Isolation:** Isolate until 2 days after the last episode of vomiting or diarrhea.
- **Roommate Isolation:** n/a
- **Additional Precautions:** Medical mask, eye protection, gown and gloves.
- **SWPH Notification Required:** Not unless there is more than one ill resident.