

COVID-19 Surveillance Report Summary

Current data as of
April 26, 2021



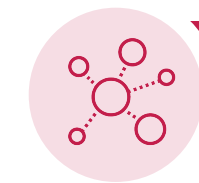
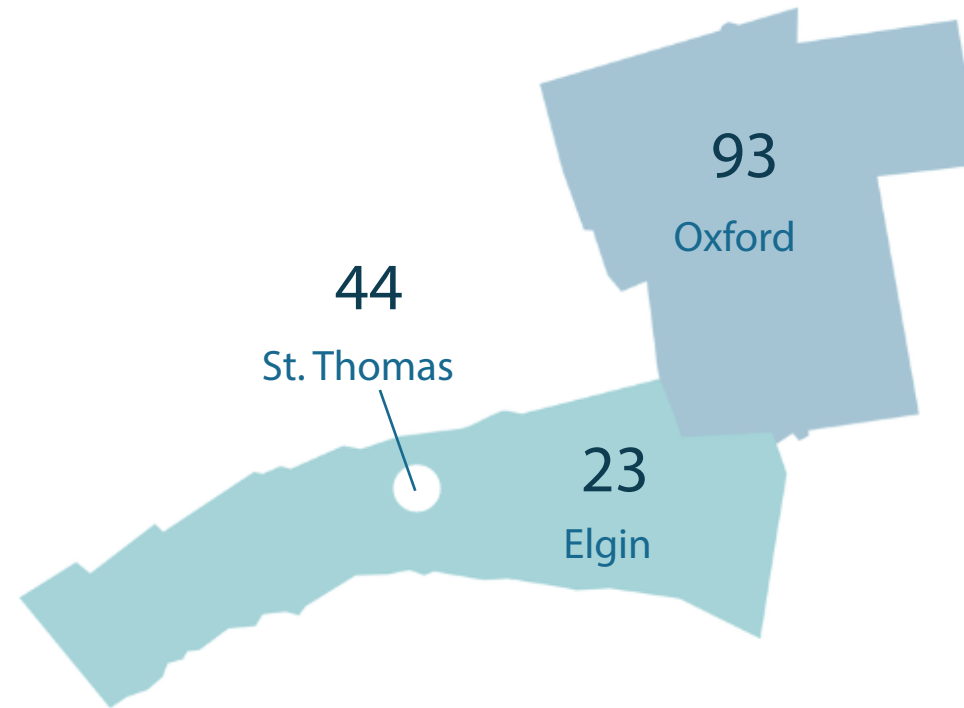
Cases Over Time

143 COVID-19 cases reported to Southwestern Public Health since last week

3,340 COVID-19 cases reported to Southwestern Public Health to date



Demographics (active)



Institutional Outbreaks

1 Active Institutional Outbreaks



Case Outcomes

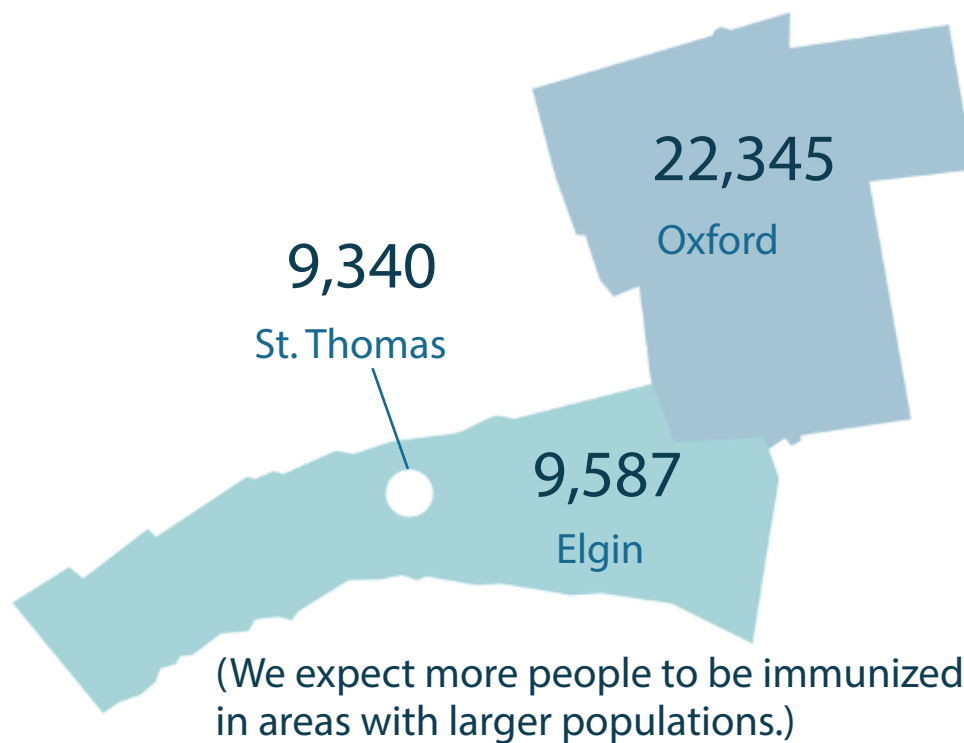
160 Confirmed ongoing cases

3,104 Resolved cases (no longer infectious)

76 Deceased cases

COVID-19 Vaccine Coverage in Our Region

Number of Southwestern Public Health residents immunized (at least one dose) by municipality
*This is not a rate - We are unable to calculate rates because we cannot estimate the total number of people eligible to receive the vaccine by location.



Demographics (age)

Vaccine coverage (as rounded %, with at least one dose)

71%	80+	11%	30-39
78%	70-79	8%	20-29
54%	60-69	3%	Under 20
25%	50-59		
16%	40-49		



Vaccine Doses Over Time

6,687 Doses administered by Southwestern Public Health last week

43,329 Total Doses administered by Southwestern Public Health to date



Population Immunized

54,874 Number of Residents immunized (at least one dose) in Southwestern Public Health region to date