

COVID-19 Surveillance Report Summary

Current data as of
April 5, 2021



Cases Over Time

101

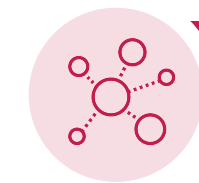
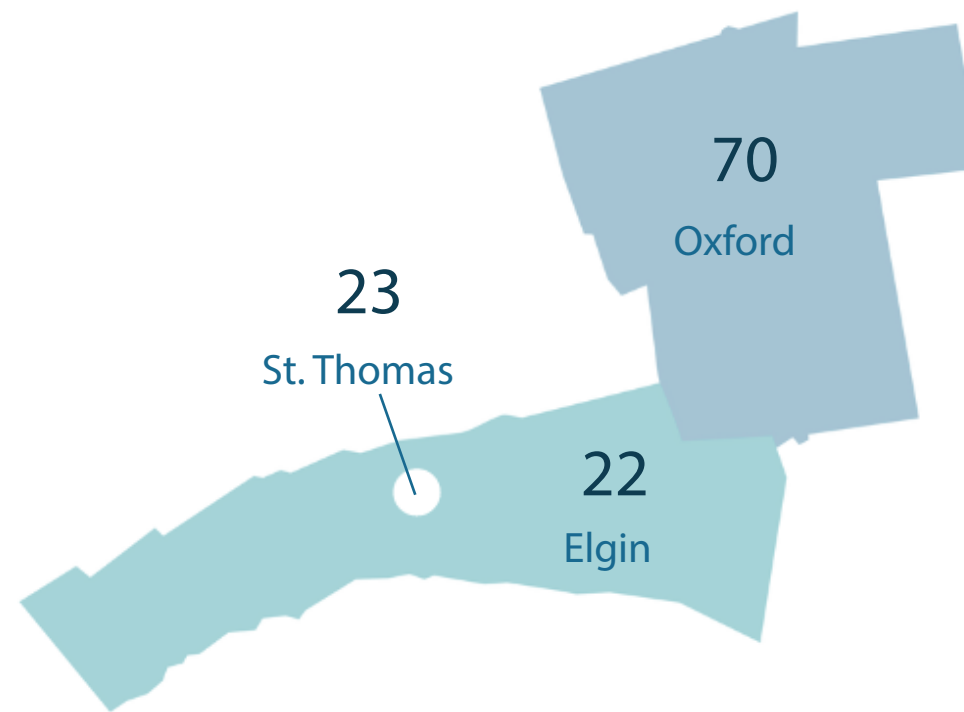
COVID-19 cases reported to Southwestern Public Health since last week

2,898

COVID-19 cases reported to Southwestern Public Health to date



Demographics (active)



Institutional Outbreaks

1

Active Institutional Outbreaks



Case Outcomes

115

Confirmed ongoing cases

2,898

Resolved cases (no longer infectious)

69

Deceased cases

Influenza (Flu) Activity in Our Region

This map indicates the level of flu activity in the Southwestern Public Health region as well as surrounding public health unit regions.

The flu activity level in an area is determined by the number of laboratory-confirmed cases of influenza and the number of outbreaks in hospitals, long-term care homes and retirement homes.

