

COVID-19 Surveillance Report Summary

Current data as of
May 10, 2021



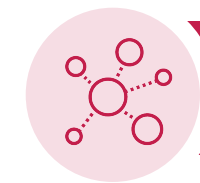
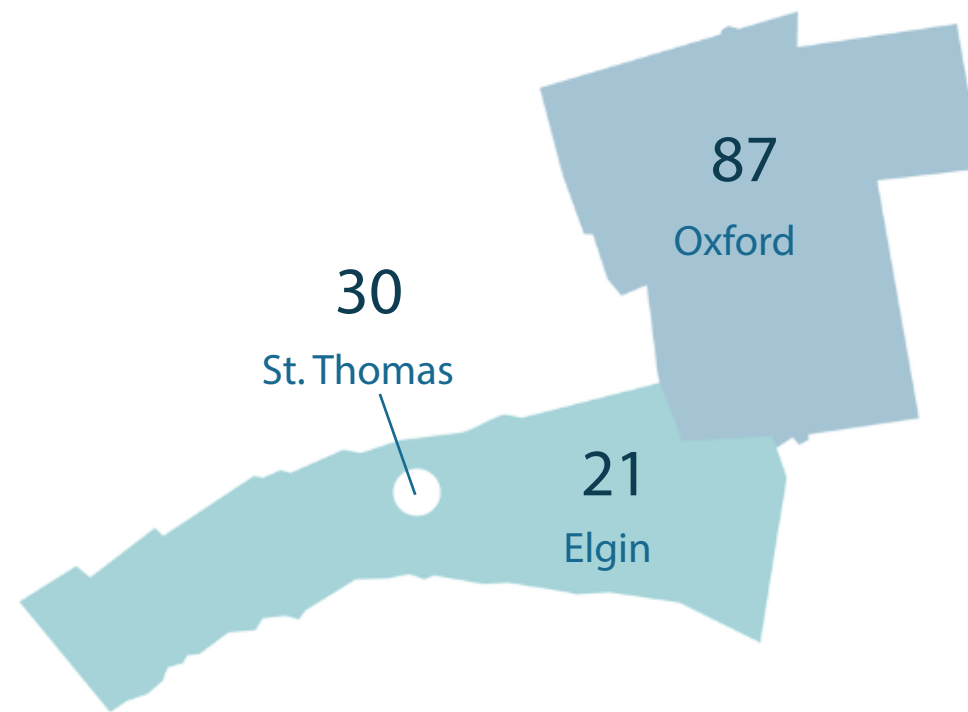
Cases Over Time

117 COVID-19 cases reported to Southwestern Public Health since last week

3,567 COVID-19 cases reported to Southwestern Public Health to date



Demographics (active)



Institutional Outbreaks

2 Active Institutional Outbreak



Case Outcomes

138 Confirmed ongoing cases

3,352 Resolved cases (no longer infectious)

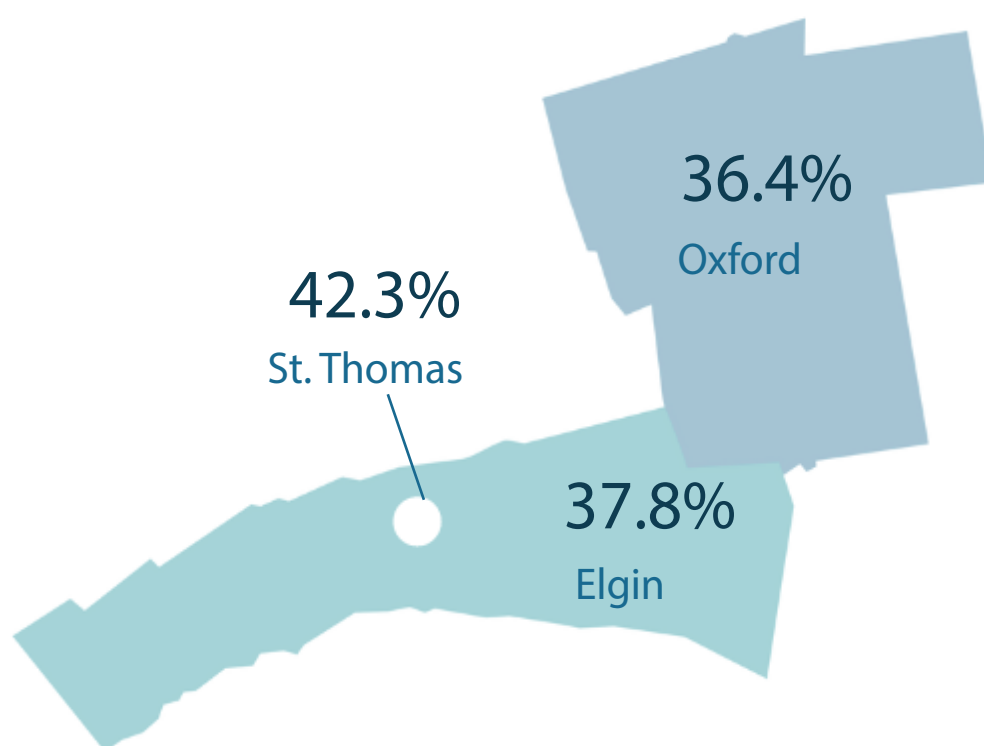
77 Deceased cases

COVID-19 Vaccine Coverage in Our Region



Demographics

Vaccine coverage in Southwestern Public Health (% with at least one dose) by location.



Vaccine coverage (% with at least one dose) by age group.

74.1% 80+	20.1% 30-39
84.3% 70-79	13.9% 20-29
75.2% 60-69	6.6% 17-19
50.1% 50-59	0.6% 12-16
33.1% 40-49	



Vaccine Doses Over Time

12,049 Doses administered by Southwestern Public Health last week

67,057 Total Doses administered by Southwestern Public Health to date



Population Immunized

77,940 Number of Residents **partially** immunized (at least one dose) in Southwestern Public Health region to date
36.6%

4,543 Number of Residents **fully** immunized (two doses) in Southwestern Public Health region to date
2.1%