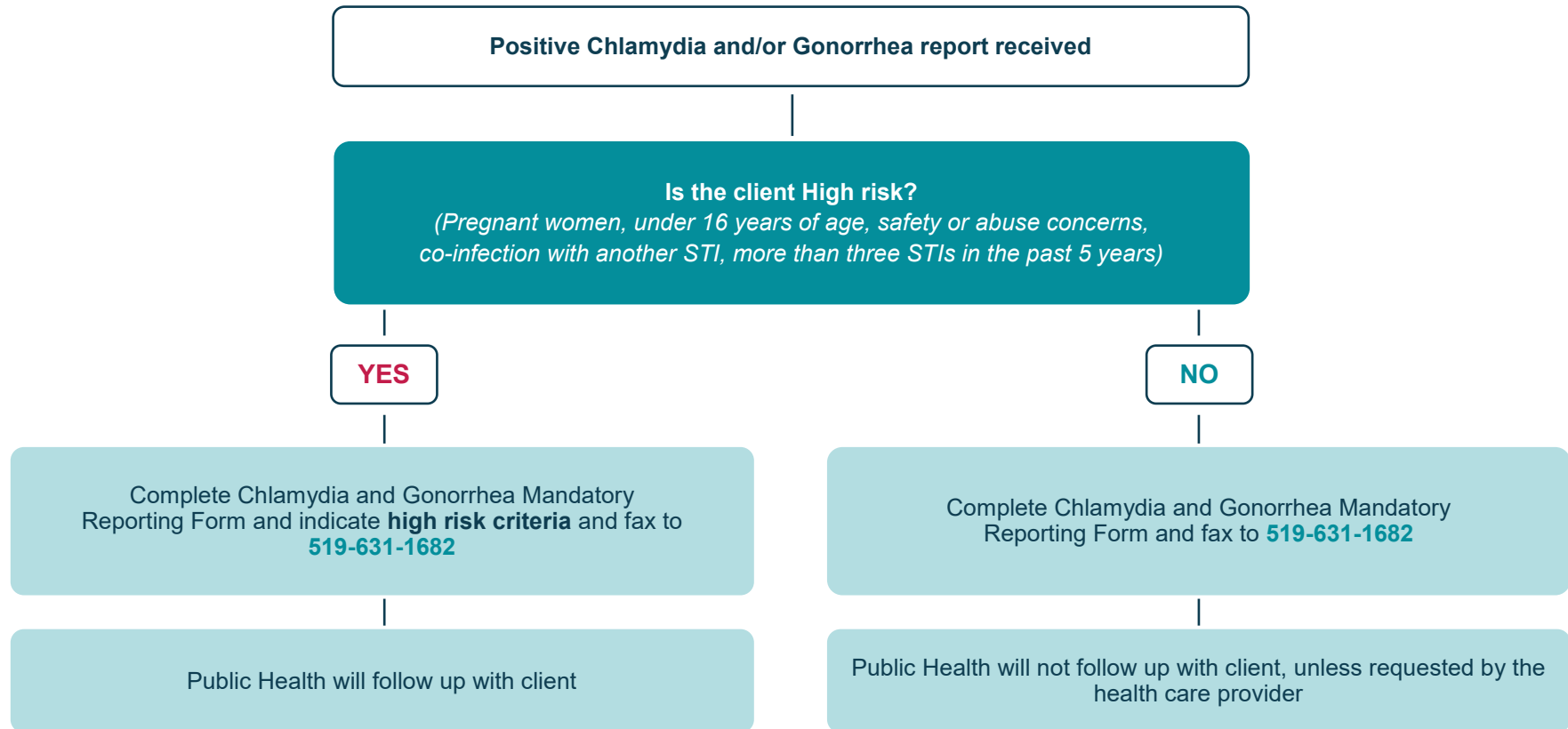


# Workflow for Positive Chlamydia and/or Gonorrhea Cases



**Note:**

Health care provider may also fax Chlamydia and Gonorrhea Mandatory Reporting form to Public Health prior to receipt of request from Public Health.

Public Health will reinforce health teaching to help prevent the spread of infection, re-infection, and assist with contact tracing as needed. Treatment will be provided or prescribed by the health care provider, unless otherwise arranged with Public Health.

Health care provider completes follow up with client, including health teaching and ensures contact follow up.